

T-115

400 HP TRAILER MOUNTED WO RIG

TECHNICAL OVERVIEW

| | |
|----------------------|--------------------------------------|
| Rating | 400 HP |
| Hook load | 270,000 lbs |
| Drilling depth | 8,000 ft (WO) 18,000 ft (Pulling) |
| Year of construction | 2004 |

MAST

| | |
|---------------------------|---------------------------------|
| Maker & Model | CARDWELL |
| Suitable for: | Double stand range 2 drill pipe |
| Static hook load capacity | 270,000 lb with 8 lines |
| Clear height | 108 ft |

SUBSTRUCTURE

| | |
|------------------|------------|
| Maker & Model | SIENA |
| Rotary Capacity | 250,000 lb |
| Setback Capacity | 250,000 lb |
| Clearance | 12,8 ft |

DRAWWORKS

| | |
|-------------------|-----------------------------------|
| Maker & Model | CARDWELL KT-250 |
| Rated input power | 400 HP |
| Drum brake type | Band |
| Auxiliary Brake | PARKERSBURG 15" DRD HYDROMATIC |

TOP DRIVE

| | |
|-------------------------------|----------------------|
| Maker & Model | N/A (Swivel & Kelly) |
| Rated load capacity | 120 tn |
| Max. continuous output torque | 14,000 lbs-ft |

ROTARY TABLE

| | |
|-----------------|------------|
| Maker & Model | IDECO 175D |
| Capacity | 325 tn |
| Maximum opening | 17 1/2" |

IRON ROUGHNECK

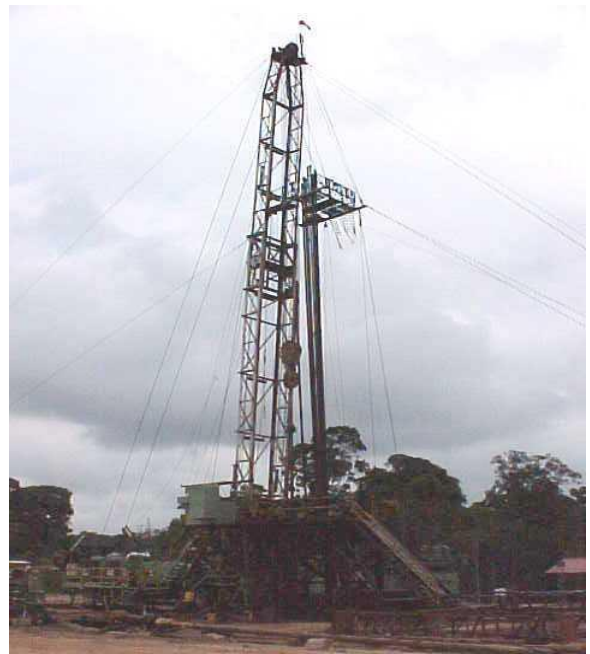
| | |
|---------------|---------------|
| Maker & Model | FOSTER 58-93R |
|---------------|---------------|

MUD PUMPS

| | |
|-------------------|---------------------|
| Quantity: | 1 |
| Maker & Model | GANDNER DENVER PZ-7 |
| Rated input power | 550 HP |
| Working Pressure | 2,000 psi |

LOW PRESSURE MUD SYSTEM

| | |
|----------------------------|-----------------|
| Number of mud tanks | 1 |
| Mud tanks total capacity | Approx. 280 bbl |
| Water tanks total capacity | Approx. 115 bbl |



SHALE SHAKERS

| | |
|---------------|--------|
| Quantity: | 1 |
| Maker & Model | BRANDT |
| Mud cleaner | NA |

LOW PRESSURE BOP

| | |
|-------------------|-----|
| Annular Preventer | N/A |
| Ram Preventer | N/A |

HIGH PRESSURE BOP

| | |
|-------------------|--------------------|
| Annular Preventer | One 11" – 3K |
| Ram Preventer | One (DBL) 11" – 3K |

CHOKE MANIFOLD GENERAL

| | |
|-----------------|---------------|
| Choke manifold | MCM OIL TOOLS |
| Size & pressure | 3.1/8" 5K |

ELECTRIC GENERATION SYSTEM

| | |
|-------------------|--------------------------|
| Engine type | CATERPILLAR 3306 |
| Horsepower Rating | 2 x 200 HP |
| Control Unit | N/A (Distribution board) |

CAMP

| | |
|-----------|---------------------|
| Mini Camp | Requested by Client |
| Main Camp | Requested by Client |

ADDITIONAL EQUIPMENT