

# T-46

## WIRTH GH 2000 EG-DC

### TECHNICAL OVERVIEW

<b>Rating</b>	2,000 HP	1,490 kW
<b>Hook load</b>	1,122,153 lbs @14 lines	509t
<b>Drilling depth theoretical</b>	23,000 ft	Approx. 7,000 m

Refurbished API CAT IV in 2012

### MAST

<b>Type</b>	Dreco M 14730-1330 cantilever	
<b>Height (incl. extension)</b>	161 ft	49 m
<b>Hook load</b>	1,122,153 lbs @14 lines	509 t

### SUBSTRUCTURE

<b>Type</b>	Dreco slingshot	
<b>Height</b>	30 ft	9.1 m
<b>Casing load</b>	1,000,000 lbs	454 t
<b>Setback load</b>	700,000 lbs	316 t

### DRAWWORKS

<b>Type</b>	Wirth GH 2000 EG-DC	
<b>Horsepower rating</b>	2,000 HP	1,490 kW
<b>Max. line pull</b>	100,000 lbs	45 t
<b>Drilling line diameter</b>	1 ½"	38 mm
<b>Auxiliary brake</b>	Baylor 6032	

### TOP DRIVE

<b>Type</b>	Bentec TD-750-HT	
<b>Capacity</b>	1,500,000 lbs	680 t
<b>Torque</b>	73,760 ft.lbs	100,000 Nm

### ROTARY TABLE

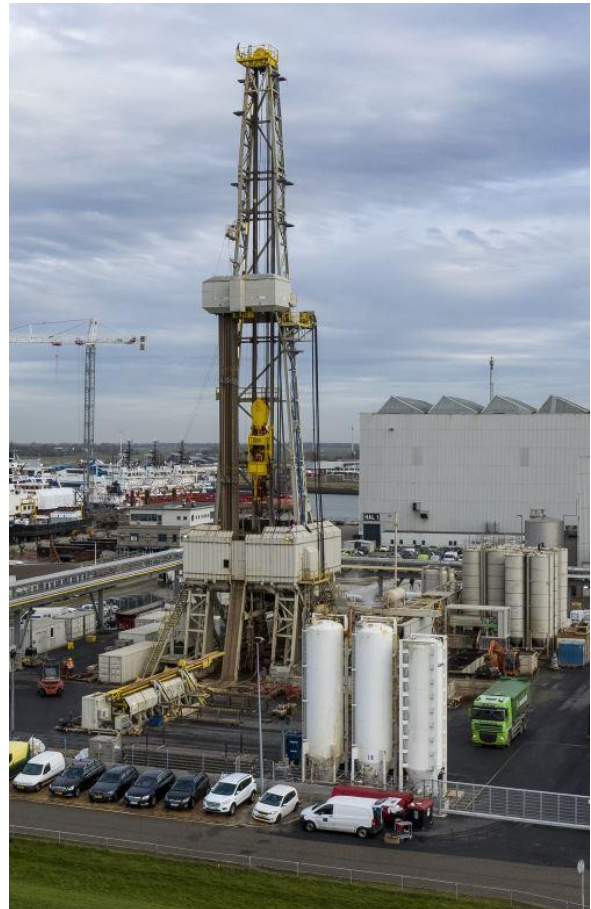
<b>Type</b>	National C-375	
<b>Table opening</b>	37 ½"	952.5 mm

### IRON ROUGHNECK

<b>Type</b>	Bentec IR-100-5	
-------------	-----------------	--

### DRIVE GROUP

<b>Engine type</b>	Caterpillar 3512B	
<b>Horsepower rating</b>	5 x 1,757 HP	1,310 kW
<b>Generator type</b>	Leroy Somer	
<b>Generator rating</b>	5 x 1,780 kVA	
<b>SCR-Unit</b>	Bentec SCR	



### MUD SYSTEM

<b>Mud pump type</b>	Wirth TPK-2000	
<b>Horsepower rating</b>	3 x 2,000 HP	
<b>Standpipe pressure</b>	7,500 psi	517 bar
<b>Active mud system</b>	786 bbl, round tank system	125 m <sup>3</sup>
<b>Reserve mud system</b>	940 bbl, 4 silos	153 m <sup>3</sup>
<b>Shale shaker type</b>	3 x Thule VSM 300 elliptical	

### BOP EQUIPMENT

<b>Depending on clients requirements</b>	All specified acc. to API 16A	
--	-------------------------------	--

### ADDITIONAL INFORMATION

#### Soundproofed Equipment:

Rig Floor, Fingerboard, Drawworks, Generators, Mud Pumps, Helical gear for Top Drive

#### Drawworks features:

Disc brake, 4-Q System with Joystick operation, Anti Collision System (ACS), Automatic Driller System

#### Power Supply:

Diesel Engine Driven or/and Grid-Power Supply with Transformer

#### Certification: API

#### Miscellaneous:

- Air Conditioned Driller Cabin with Bohr Drill-Pro & CCTV
- Bentec IOS (Integrity & Optimization Systems)
- Mechanized Catwalk System – Bentec MCS
- Skidding System
- Round Tank System (covered)